

transportni



Department for
**Regional
Development**
www.drdni.gov.uk

EASTERN DIVISION

Report to

BELFAST CITY COUNCIL
Spring 2015



INVESTORS
IN PEOPLE

CONTENTS

PAGE

	FOREWORD BY EASTERN DIVISIONAL MANAGER	iii
1.0	INTRODUCTION	1
2.0	STRATEGIC ROAD IMPROVEMENTS	9
	2.1 York Street Interchange Scheme	10
	2.2 A2 Sydenham Bypass Improvement Scheme	11
	2.3 A55 Knock Road Improvement Scheme	11
3.0	NETWORK DEVELOPMENT	13
	3.1 Minor Works	14
	3.2 Bus Measures and Belfast Rapid Transit	14
	3.3 Maintenance of Structures	15
	3.4 Belfast On The Move	18
	3.5 Belfast City Centre Ring-South Section	20
4.0	NETWORK TRAFFIC AND STREET LIGHTING	21
	4.1 Collision Remedial Schemes	22
	4.2 Traffic Schemes	22
	4.3 Pedestrian Measures	24
	4.4 Safer Routes to School	26
	4.5 Traffic Signs	27
	4.6 Carriageway Markings	29
	4.7 Legislation	32
	4.8 Disabled Parking Bays	34
	4.9 Street Lighting	35
	4.10 Cycle Measures	38
	4.11 Traffic Calming	39
	4.12 Car Parking	40
	4.13 Residents' Parking	41
5.0	NETWORK TRANSPORT TELEMATICS	43
	5.1 Network Transport Telematics	44
6.0	NETWORK MAINTENANCE	47
	6.1 Carriageway Resurfacing	48
	6.2 Footway Resurfacing	50
	6.3 Drainage	52
	6.4 Public Realm	53
	6.5 Streets Ahead Project	53
	6.6 Liaison with Utilities	53
7.0	NETWORK PLANNING	55
	7.1 Adoptions	56
	7.2 Planning Applications	58

FOREWORD BY THE EASTERN DIVISIONAL MANAGER



Kevin Monaghan
Divisional Manager

Mayor, Aldermen and Councillors

I am very pleased to present my Spring Report on TransportNI work to Belfast City Council.

Eastern Division now covers the two Council areas of Belfast and Lisburn & Castlereagh. It is one of four Divisions, each of which manages, improves and maintains the transport network and is the primary contact point for road users and public representatives.

This report deals with works completed in the Belfast City Council area during the year 2014/2015 and sets out our initial proposals for schemes to be undertaken in the year 2015/2016. The capital funding available for improvement schemes and road maintenance is greatly reduced this year and there is very limited resource funding available for routine maintenance activities. This will result in TransportNI only being able to provide a skeleton routine maintenance service in most areas.

I am pleased to report that a wide programme of Local Transport and Safety Schemes was delivered last year. I am also pleased to report that a large programme of maintenance schemes was delivered in 2014/2015, through successful in-year monitoring bids, despite a low level of funding being available at the start of the financial year.

I hope that you find this report informative. TransportNI values constructive comment on all its activities and I look forward to meeting Council members on 10th June 2015.

Kevin Monaghan
Divisional Manager
Eastern Division
'Hydebank'
4 Hospital Road
Belfast BT8 8JL

1.0 INTRODUCTION

Eastern Division is part of the overall structure of TransportNI (see figure 1 below) which is based on separate business units for those who order services (clients) and for those who provide services (Design and Consultancy Services and Operations and Maintenance).

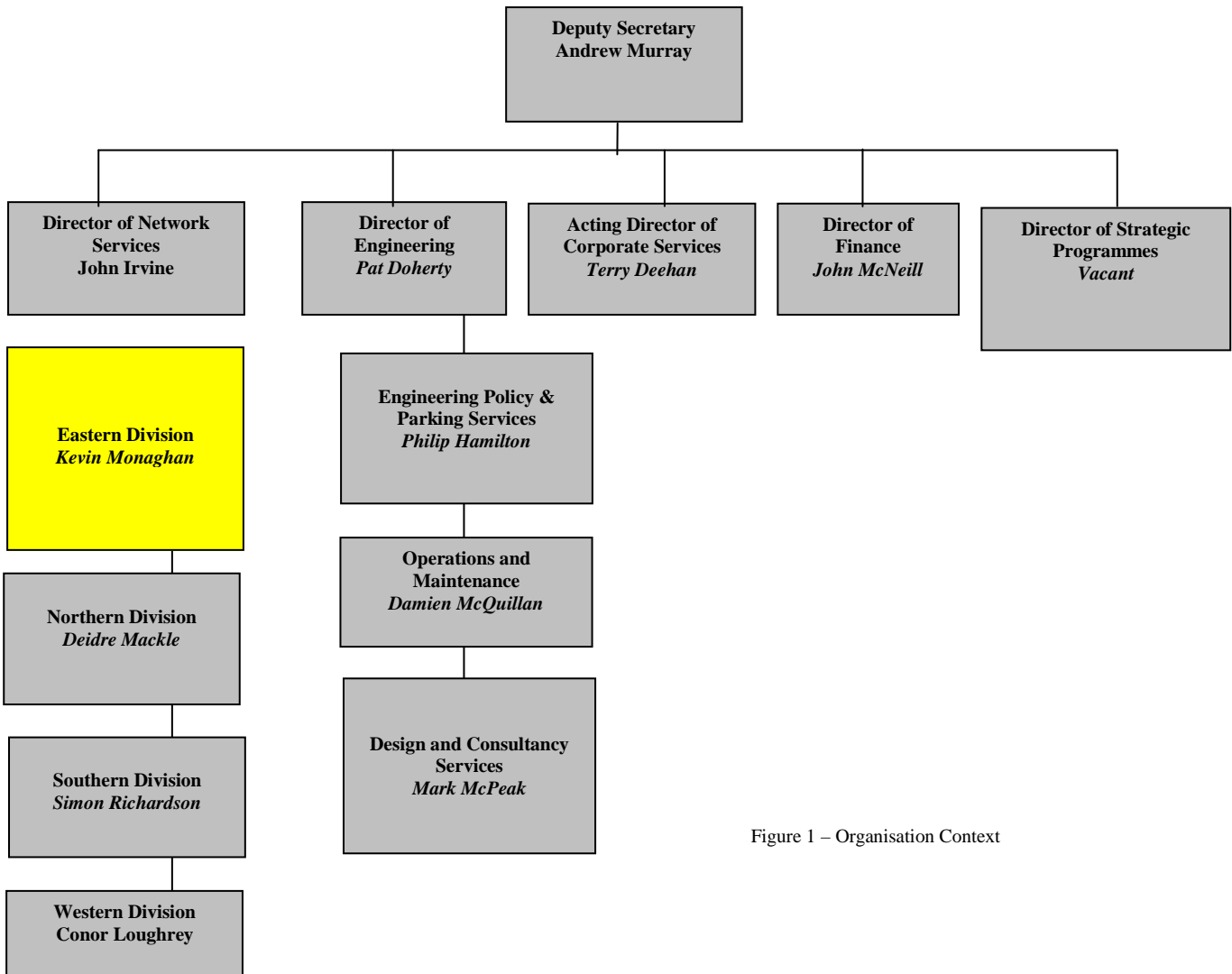


Figure 1 – Organisation Context

Eastern Division Management Structure



Kevin Monaghan (9025 3001)
kevin.monaghan@drdni.gov.uk
Divisional Manager



Norman Chambers (9025 3006) norman.chambers@drdni.gov.uk
Network Traffic and Street Lighting

Traffic Management minor improvements, pedestrian priority, traffic orders, signing, collision remedial schemes, Street Lighting, resident and disabled parking, car parks and pay and display spaces, cycling and traffic calming.



Philip Robinson (9025 3080) philip.robinson@drdni.gov.uk
Network Planning

Development Control, Private Streets and Transport Assessments



Brian Maxwell (9025 4500) brian.maxwell@drdni.gov.uk
Network Transport Telematics

Traffic signal control, operation of the Traffic Information and Control Centre, Traffic and travel information and European projects INSTANT and STREETWISE.



Attracta Tremers (9025 3036) attracta.tremers@drdni.gov.uk
Business Support

Financial control, land acquisition and disposal, retained human resources, building management and office supplies, council reports, business plan and communications.



Roy Spiers (9025 3002) roy.spiers@drdni.gov.uk
Strategic Route Improvements

Developing and progressing Strategic Highway Improvements within Eastern Division.



Stephen Pollock (9025 3071) stephen.pollock@drdni.gov.uk
Network Development

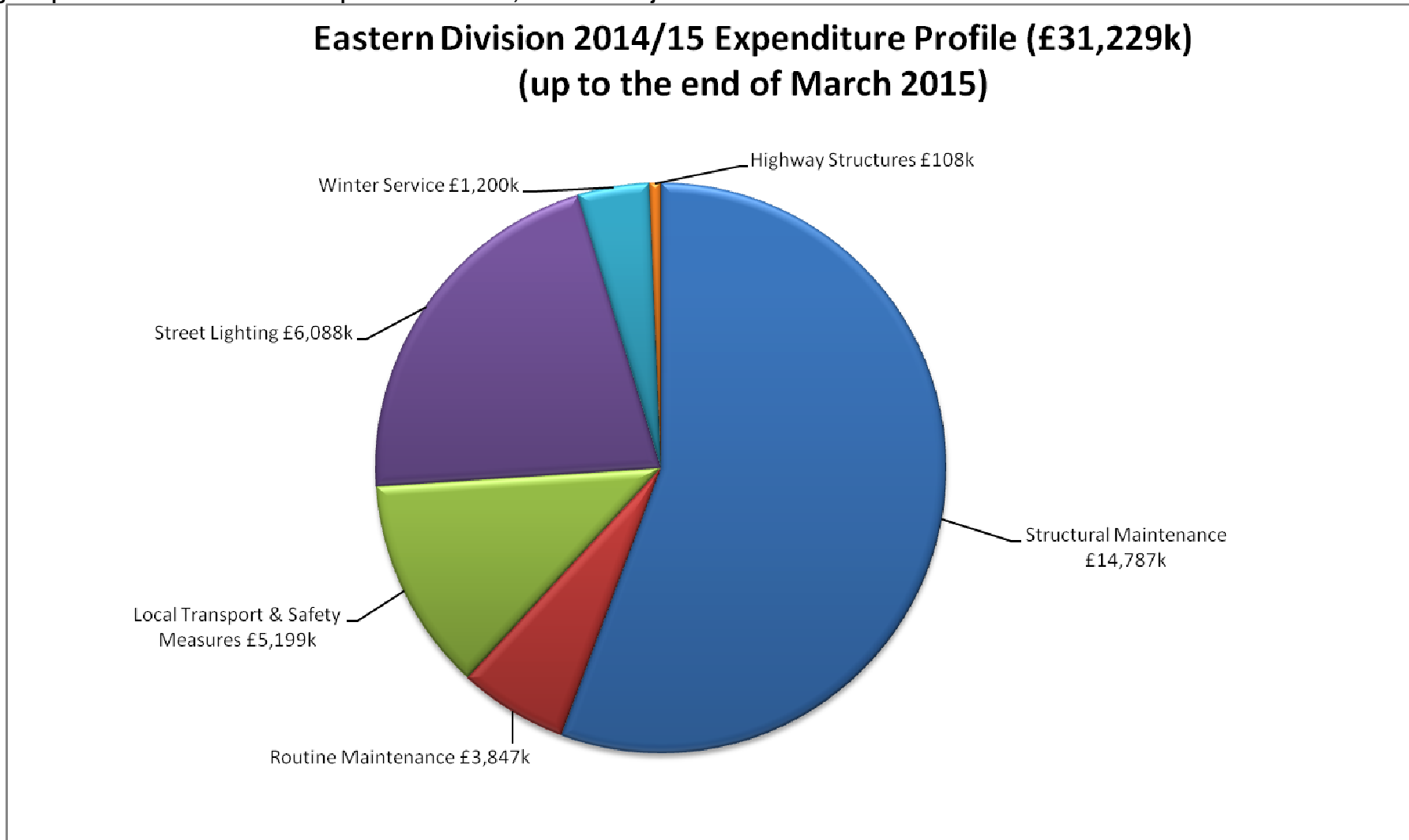
Minor works programme, maintenance and strengthening of structures, QBC & bus priority, 'Park and Ride schemes, Forward Planning, BoTM, and BRT infrastructure delivery.



Colin Sykes (9025 3111) colin.sykes@drdni.gov.uk
Network Maintenance

Maintenance of adopted roads and footways including inspections, resurfacing, drainage, grass cutting and weed control, winter gritting and liaison with the utility companies.

NB: Figures provided are Eastern Division's provisional outturn, which are subject to Audit before finalisation.



Belfast City Council area – Key Statistics

Roads infrastructure	Eastern Division	Belfast City Council area
Length of public road (km)	2407	1091
Length of footway (km)	3063	2133
Number of bridges	395	133
Number of street lights	72629	45874
Number of car parks	46	33
Number of car parking spaces	3742	2736

WHAT WE DO

Maintaining the road network

Structural maintenance

Maintaining the network in a safe and serviceable condition remains one of our highest priorities.

Structural maintenance includes:

- The resurfacing and surface dressing of roads and footways
- The repair of surface defects, such as potholes and broken flagstones
- The replacement and repair of road gullies, culverts and manholes

Within the Eastern Division area in 2014/15 we:

- Invested £14.8 million on structural maintenance
- resurfaced 102 lane km of the road network
- resurfaced 25 km of footways

Condition of the network

Monitoring the condition of our road network is an essential part of planning maintenance work and, in order to detect deterioration at an early stage, we undertake a number of annual road condition surveys using specialist vehicles to measure the strength, surface condition and skidding resistance of our roads.

In 2014/15 71.9% of the motorway and 76.8% of trunk road network had a residual life of more than 5 years compared to a target of 70% respectively. The information from the survey gives us an indication of areas of the road network which require further investigation and are likely to require maintenance.

Routine maintenance

Routine maintenance is important, both to enhance user safety and to help prevent more significant and costly maintenance problems building up over time.

In Eastern Division during 2014/15 we:

- invested around £2.2 million replacing road markings, cutting grass verges to maintain visibility, emptying gullies and maintaining or replacing safety barriers, and maintaining street trees, verges and fences.
- repaired 53,217 road defects following inspections.

Managing the road

We manage the road network to promote its safety and efficient operation. We have continued to make use of the latest technology and traffic management techniques to improve road safety, provide facilities for all road users, and effectively manage the network. This has included:

- Monitoring and management of traffic signal timings
- Responding to at least 97% of urgent traffic signal faults within 24 hours
- The use and extension of traffic control and monitoring systems
- The promotion and introduction of Puffin crossings
- The provision and management of motorway control systems
- The provision of accurate and reliable traffic information to the public

Within Eastern Division during 2014/15 we:

- Completed the migration of the BusTrak system (Real Time Passenger Information) to a new operating platform to ensure its continued robustness and expandability.
- Installed real-time passenger displays in 15 metro bus shelters on the Lisburn Road, Belfast.
- Provided pre-trip information on the trafficwatchni website, www.trafficwatchni.com, via radio broadcasts and our traffic information telephone line 08457123321. Carried out further enhancements to the trafficwatchni website to ensure its continued robustness and added information on Weight Restricted roads and the Strangford Lough Ferry Information to the website.
- Replaced traffic signals at 2 signalised junctions.
- Installed the advanced traffic signal control system, called MOVA (Microprocessor Optimised Vehicle Actuation), at 2 locations.
- Commenced migration of the Urban Traffic Control Communications system (UTC) to a new operating platform to ensure its continued robustness and expandability.

Winter Service

The aim of winter service is to help, as far as possible, main road traffic to move safely and freely in wintry conditions by spreading salt at the most effective times.

Eastern Division, has a fleet of 22 gritters and over 100 personnel available to salt approximately 1,239km of main roads.

There were 78 call-outs this year, using around 11,800 tonnes of salt, at a cost of approximately £15k per call-out to treat all roads on the salting schedule. Eastern Division completed 95% of winter salting actions within 4 hours, exceeding the target.

Our total winter service expenditure was £1.2m

Emergency Response Service

We have procedures in place to assist with roads related emergency incidents to ensure a response, 24 hours a day, 7 days a week.

Our emergency response procedures are supported by a well established reporting system to gather operational information from across Northern Ireland during an emergency. A lead communicator is available out of hours all year round to ensure that the latest news on road conditions is available to the travelling public and we have enhanced the trafficwatch website to enable the lead communicator to keep this information updated including Social Media System and Twitter.

Development Control and Private Streets

Development Control staff act as consultee to DOE Planning, providing advice on road safety, traffic progression, transportation, roads layout/standards and policy compliance.

During the 2014/15 financial year, Eastern Division dealt with over 2,620 planning application consultations and processed an average 76% of these within 15 working days. (A 70% return is the target set in the Service Level Agreement with Planning Service).

In relation to new housing developments, 17.2km of Private Streets have been determined in 2014/15. This means that if and when the streets are built to the agreed layout and standard, they will be adopted into the public roads network.

61 new sites have started since April 2014 representing approximately 5km of new roads and footways. At 31 March 2015 we held £23.6M in bonds, and during 2014/15, £2.3M bonds were processed with £3.3M released on adoption.

Street Works

Our road network is a major public asset valued at over £32 billion. It accommodates a network of underground pipes and cables which deliver key services to the public including water supply, waste water disposal, electricity, gas and telecommunications.

Utility companies have the right to open the public road to place or maintain their equipment. In 2014/15 there were 48,666 utility company road openings across Northern Ireland, with some 15,708 in Eastern Division. We work closely with utility companies to minimise disruption caused by street works and ensure better quality reinstatements.

Our Inspectors in Eastern Division have carried out over 4,500 visits to streetworks sites to inspect work in progress and completed reinstatements.

Improving the Road Network

Major Road Improvements

The budget to the end of the 2015 Budget period will allow development work to continue on a range of other major projects which are of a higher priority. Delivery of these schemes is dependent on funding levels envisaged through the Investment Strategy for Northern Ireland 2011-21 and future budget settlements.

While the A2 Shore Road scheme now lies within boundary of the new Northern Division, Eastern Division has continued with the management of the construction of the scheme.

- A2 Shore Road Greenisland – Work commenced on site in March 2013 and completion is expected in summer of 2015.

Within Eastern Division there are currently three road schemes being developed. These are the York Street Interchange, the A55 Knock Road and the A2 Sydenham Bypass.

- York Street Interchange - Following the publication of the Statutory Orders for the York Street Interchange on 28th January and 4th February 2015, the Formal Consultation period ran until 10th March 2015. Following an assessment of the objections received, the Minister has announced that a Public Inquiry will be held in the Autumn of 2015 to hear the issues raised during the Consultation.
- A55 Knock Road - Roads Service published the Notice of intention to Proceed and the Direction Order in September 2012 following the completion of a Departmental Statement. While there is currently no funding for this scheme, work can be progressed should additional funds become available.
- A2 Sydenham Bypass – the preferred option for the scheme was published in February 2010. Scheme development work is ongoing.

The commencement of construction for the York Street Interchange, the A55 Knock Road and the A2 Sydenham Bypass will depend on the satisfactory completion of an economic assessment, completion of the statutory process and subject to funding being made available by the Executive in future budget settlements.

Bridge Strengthening

TransportNI regularly inspects its stock of bridges and other structures on the public road network.

Last year across Eastern Division we inspected 179 structures and carried out maintenance and repair work to 16 structures. In 2014/15 we spent a total of £188k on strengthening and maintaining our current stock of bridges, culverts and retaining walls.

Local Transport and Safety Measures

In 2014/15 we spent over £5.1million on a range of measures to improve the safety and efficiency of the road network. In Eastern Division this included implementation of:

- 24 Minor Works improvement schemes
- 6 Collision Remedial measures at specific sites
- 2 Traffic Calming measures;
- 0.2 kms of new cycle facilities
- 5 Safer Routes to School Schemes;
- 10 Controlled Pedestrian Crossings
- 0.52 kms of new/enhanced footway provision
- Improvements to the trafficwatch website and the motorway control system as well as continuously ongoing work to improve the performance of our traffic signals and pedestrian controlled crossings.

Street Lighting

We provide and maintain street lighting on all adopted roads in urban areas and in certain circumstances, on rural roads.

In 2014/15 we spent £3.6 million installing new and maintaining existing lighting systems in Eastern Division. This excludes the energy costs which were £2.5 million.

Regrettably, because of budget constraints the Department is facing very significant resource pressures going into 15/16.

We will continue to carry out electrical inspections and testing of street lighting to ensure public safety and to deal with any electrical or structural defects identified. However, the budget situation

will only allow us to provide an in-house skeleton service for routine maintenance activities. We anticipate that we will only be able to repair around 25% of street light outages using our internal workforce.

We will prioritise our responses to deal with street lighting faults.

1. Priority will be given to faults that are posing an electrical hazard.
2. Secondly we will deal with with group outages.
3. Group day burners.
4. Unfortunately, single outages and single day burners, are a lower priority and may take some time to be repaired as they are being dealt with in chronological order.

Customer Service

TransportNI aims to inform, consult and involve customers by:-

- supplying up-to-date information through our publications, at shows and exhibitions and via our website <http://www.drdni.gov.uk> and;
- listening to customer needs; and
- remaining open, transparent and visible at all times.

We publish a wide range of information leaflets on specific road schemes and on the services we provide. Our free newspaper, "On the Move", is published twice a year and distributed through our local offices and public libraries.

We provide up-to-date travel news through our travel information website www.trafficwatchni.com and our traffic hotline for Greater Belfast on 08457 123321. Traffic information is updated at 10 minute intervals and broadcast on BBC Radio Ulster during peak times.

During the development phase of major roads projects, we consult with a wide range of stakeholders, including elected representatives and the public and, particularly, those likely to be directly affected by the works. We hold exhibitions at local venues and inform the public through press articles, leaflet drops and individual visits, as necessary.

During 2014/15 we received 4,579 written enquiries from the general public and responded to 93.8% of these within 15 days.

2.0 STRATEGIC ROUTE IMPROVEMENTS

Principal Engineer – Roy Spiers(9025 3129) roy.spiers@drdni.gov.uk

He is supported by the following staff:

Strategic Road Improvement 1 – Colin Pentland (ext 53212)
colin.pentland@drdni.gov.uk

Colin is responsible for progressing development of the York Street Scheme and the A55 Knock Road widening. Colin is supported by Colin McBurney (ext 53016)



Strategic Road Improvement 2 – Basil Hassard (9025 3272)
basil.hassard@drdni.gov.uk

Basil is responsible for development of the A2 Shore Road dual carriageway scheme, the M1 / A1 Link at Sprucefield and the Sydenham By-pass scheme. Basil is supported by Bobby Murray (ext 53232).



2.1 YORK STREET INTERCHANGE SCHEME

The Westlink / York Street junction is a key link on the Strategic Road Network that presently connects Westlink and the M2 and M3 motorways through a complex traffic signal controlled gyratory system, which also connects with the local road network. This arrangement (and its high traffic usage) causes significant congestion and long delays, particularly at peak times. The recent improvements to the M1/Westlink and M2 Motorway also mean that traffic is now being delivered much more quickly to this junction.

In March 2009, Eastern Division completed the Preliminary Options Report, which assessed six options to grade separate the Westlink / York Street junction and provide direct links between Westlink and the M2 and M3 motorways. The Report recommended that four preliminary options be taken forward for further detailed consideration at the next stage of development, the Stage 2 Scheme Assessment. This work included a public consultation event into the scheme options at the Ramada Encore Hotel, Belfast

A Ministerial Announcement was made on 6 December 2012 outlining the Preferred Option for the York Street Interchange at an event in the Ramada Encore Hotel.

Following this announcement, work on scheme design and preparation of the Statutory Orders was undertaken. The Draft Statutory Orders for this scheme were published on 28th January and 4th February 2015 following a Ministerial Announcement on 27th January 2015, with an Orders Exhibition being held in the Ramada Encore Hotel, Belfast on 9th and 10th February 2015. The Public Consultation period for the Orders ran until the 10th March and following due consideration, The Minister has announced that a Public Inquiry into the scheme will be held in the Autumn of 2015.

The timescale for construction of the new junction will be dependent upon the successful completion of the necessary statutory procedures, an economic appraisal and the provision of funding through the normal budgetary processes.



Preferred Option to improve York Street Interchange

2.2 A2 SYDENHAM BYPASS IMPROVEMENT SCHEME

The A2 Sydenham Bypass is one of the most heavily trafficked carriageways in the Belfast Metropolitan Area and forms a vital section of the strategic highway network, linking Bangor and Belfast. The road also provides access to the key gateways of George Best Belfast City Airport, Belfast Port and to several large residential areas. The proposed scheme will widen a 2.5km stretch of the existing A2 Sydenham Bypass from a dual 2-lane carriageway to a dual 3-lane carriageway.

The scheme is currently in the third stage of a three stage assessment process. Stage 1 focused on identifying the environmental, engineering, economic and traffic advantages and disadvantages, as well as the constraints associated with broadly defined improvement strategies. This concluded in the selection of the Proposed Corridor in May 2008. In Stage 2, a detailed assessment of a range of options within the Proposed Corridor was considered. This concluded in the selection of the Preferred Option in February 2010. Stage 3, currently underway, involves detailed assessment of the Preferred Option and ongoing consultation with key stakeholders. This will result in the publication of the Statutory Orders; the draft Direction Order, Environmental Statement and Notice of Intention to Make a Vesting Order.

The Budget for the current period should allow development work on Stage 3 to continue. Progress of the scheme beyond this is subject to the satisfactory outcome of the statutory processes and future years funding.

2.3 A55 KNOCK ROAD IMPROVEMENT SCHEME

The public inquiry for this scheme was held in November 2010. The Inspector's Report, received in March 2011, made a number of recommendations and we carried out further traffic surveys and assessments in consideration of the report. The Inspector's Report and a response to the Inspector's recommendations have now been considered and included in the Departmental Statement. The Notice of Intention to Proceed and the Direction Order were published in September 2012.

The Department proposes to proceed with the scheme, however, there is no funding currently identified for its implementation. While the funding has not been identified, this is one of several schemes which the Department continues to progress to a procurement ready position should additional funding become available.

3.0 NETWORK DEVELOPMENT

Principal Engineer – Stephen Pollock (9025 3071) stephen.pollock@drdni.gov.uk

He is supported by the following staff:

Works and Structures - David Grills (9025 3153)
david.grills@drdni.gov.uk

This team is responsible for major works, minor works and Structures.



Bus Priority - Harry Armstrong (9025 3022)
harry.armstrong@drdni.gov.uk

This team is responsible for delivery of BRT Infrastructure, the Quality Bus Corridor (QBC) programme, other bus priority Measures and park and ride.



Forward Planning Team 2- Stephen Gardiner (9025 3164)
Stephen.gardiner@drdni.gov.uk

This team is responsible for the development of schemes on the non-strategic route network through route improvement studies. It is also developing and progressing the management of the Belfast on the Move Transport Masterplan proposals for the City Centre and is a point of contact for Belfast Metropolitan Area Plan inquiries and Regeneration Initiatives.



3.1 MINOR WORKS

2015/16 Programme of Works

<i>Scheme</i>	<i>Status</i>
No Minor Works schemes are currently programmed. Councillors are invited to suggest improvement schemes for consideration.	

3.2 BUS MEASURES

2014/15 Works Completed

<i>Scheme</i>	<i>Status</i>
Extension of the existing waiting restrictions at the coach lay-bys in Chichester Street and High Street from 6 days a week to seven days a week	Completed
Provision of Traffic Light Priority at the following junctions:- <ul style="list-style-type: none"> • Newtownards Road at Dee Street • Newtownards Road at Templemore Avenue • Oxford Street at Lanyon Place • Knocknagoney Road at Tillysburn • Holywood Road at Parkway 	Completed
Belfast Rapid Transit	
Upper Newtownards Road (Sandown Road to Knock Road) - Carriageway widening, resurfacing and improvements to drainage and pedestrian crossing facilities.	Completed



Upper Newtownards Road (Sandown Road to Knock Road)

BUS MEASURES

2015/16 Programme of Works

<i>Scheme</i>	<i>Status</i>
Belfast Rapid Transit	
Albertbridge Road (Castlereagh Street to Newtownards Road) - Carriageway widening, resurfacing and improvements to drainage and pedestrian crossing facilities.	Design work in progress.
Upper Newtownards Road (Albertbridge Road to Sandown Road) – Carriageway widening, resurfacing and improvements to drainage and pedestrian crossing facilities.	Design complete. Works commenced May 2015
<i>Scheme</i>	<i>Status</i>
Upper Newtownards Road (Knock Road to Dunlady Road - Carriageway widening, resurfacing and improvements to drainage and pedestrian crossing facilities.	Design work in progress.
Divis St/ Falls Road (Millfield to Grosvenor Road) – Carriageway widening, resurfacing and improvements to drainage and pedestrian crossing facilities.	Design complete. Works due to commence on site July 2015.
Falls Road (Grosvenor Road to Whiterock Road) – Carriageway widening, resurfacing and improvements to drainage and pedestrian crossing facilities.	Works commenced on site September 2014.
Falls Road /Andersonstown Road (Whiterock Road to Finaghy Road North) - Carriageway widening, resurfacing and improvements to drainage and pedestrian crossing facilities.	Design work in progress.
Andersonstown/Stewartstown Road (Finaghy Road North to Michael Ferguson Roundabout) - Carriageway widening, resurfacing and improvements to drainage and pedestrian crossing facilities.	Design complete. Works due to commence on site Spring 2016

3.3 MAINTENANCE OF STRUCTURES 2014/15 Works Completed

<i>Scheme</i>	<i>Status</i>
Principal Inspections	
Bridge No 20139 – Ballysillan Road	Completed
Bridge No 20127 – North Queen Street, Culvert	Completed

Scheme	Status
Bridge No 20130 – Clowney Culvert	Completed
Bridge No 20135 – Islandbawn St/Clowney	Completed
Bridge No 20247 – Abington Street, Footbridge	Completed
Bridge No 20189 – Sydenham By-Pass	Completed
Bridge No 20222 – Lislea Avenue, Footbridge	Completed
Bridge No 20234 – Blacks Road Rail Bridge	Completed
Bridge No 20252 – Lisburn Road/University Road	Completed
Bridge No 20253 – Botanic Avenue	Completed
Bridge No 20254 – Ormeau Road, Railway Bridge	Completed
Bridge No 20333 – Forthriver Primary School, Culvert	Completed
Bridge No 20136 – Legoniel Rd (A)	*Completed
Bridge No 20185 – Newtownards Rd/Connswater	* Completed
Bridge No 20222 – Lislea Avenue footbridge	* Completed
Bridge No 20247 – Abingdon Street footbridge	* Completed
Concrete/Composite Structures	
Bridge No 20179 - Bridge End Flyover – Repainting of Steel Parapets	Completed
Bridge No 20245 – Stockmans Lane, Subway – Defective Manhole Cover	*Completed
Bridge No – 20232 - Finaghy Rd North Bridge – Removal of offensive graffiti	*Completed
Masonry Structures	
Stranmillis Retaining Wall – Concrete Repairs and Replacement of Metal Railings as part of an Environmental Improvement Scheme.	Substantially Complete
Bridge No 20261 - Ladas Way/Loop River – Parapet repairs	*Completed
Bridge No 20126 – East Bridge Street – Fence repairs and debris removal	*Completed
Steel Structures	
Bridge No 20189 - Sydenham By-Pass, Footbridge – Repairs to Handrails	*Completed
Bridge No 20251 – Lower Windsor Avenue – Repairs to defective handrail sections	*Completed
Miscellaneous	
Forfar Road – Repairs to damaged section of metal fencing	*Completed
Montgomery Rd/Sterling Avenue – Temporary repairs to collapsed culvert	*Completed

* Additional to programme

MAINTENANCE OF STRUCTURES Inspections & Works

2015/16 Programme of

<i>Scheme</i>	<i>Status</i>
Bridge No 20124 – East Bridge Street (Road)	Programmed
Bridge No 20126 – East Bridge St(ACCOM)	Programmed
Bridge No 20129 – Sunningdale Park	Programmed
Bridge No 20162 – Ann St Subway	Programmed
Bridge No 20194 – High St Subway	Programmed
Bridge No 20180 – Tillysburn Underpass at city Airport	Programmed
Bridge No 20185 – Newtownards Rd / Connswater	Programmed
Bridge No 20188 – Victoria Pk S'Way	Programmed
Bridge No 20191 – Tillysburn S'Way A	Programmed
Bridge No 20192 – Tillysburn S'Way B	Programmed
Bridge No 20193 – Tillysburn S'Way C	Programmed
Bridge No 20195 – North Rd Bridge	Programmed
Bridge No 20241 – Lisburn Road	Programmed
Bridge No 20242 – Boucher Crescent 1	Programmed
Bridge No 20243 – Boucher Crescent 2	Programmed
Bridge No 20244 - Glenmachan Place	Programmed
Bridge No 20245 – Stockmans Lane Subway	Programmed
Bridge No 20249 – Fane St.FootBridge	Programmed
Bridge No 20250 – Tates Ave Bridge	Programmed
Bridge No 20256 – Kings Bridge	Programmed
Bridge No 20259 – Beersbridge Road	Programmed
Bridge No 20261 – Ladas Way/Loop River	Programmed
Bridge No 20263 – Grand Parade	Programmed
Bridge No 20264 – Orby Link Bridge	Programmed
Bridge No 20266 – Knockvale Grove	Programmed
Bridge No 20332 – Bridge End Subway	Programmed

3.4 BELFAST ON THE MOVE

<p>The Belfast on the Move project was undertaken by the Department to help create a more accessible city centre. By reorganising traffic management in Belfast city centre, the project set out to encourage greater walking, cycling and public transport use in line with the aims of the Belfast Metropolitan Transport Plan.</p>	
<p>The project has delivered:</p> <ul style="list-style-type: none">• Over 2.6km of new bus lanes, which also accommodate cyclists and permitted taxis;• A new 'two-way' traffic flow in Hope Street ;• 23 new controlled pedestrian crossing points;• 340m of new dedicated service bays;• 0.5km of new dedicated cycle lanes; and• 37 additional dedicated disabled parking bays	
<p>'Before' and 'after' surveys were undertaken to assess the impact of the project in relation to its main aims:</p> <ul style="list-style-type: none">• a more accessible city• a reduction in general traffic levels• encouragement of greater walking, cycling and public transport use	

The analysis of the surveys shows that since the traffic management changes were completed in October 2013:

- The city centre is more accessible:
 - An increase of over 6% in the number of people entering the city centre in the morning peak.
 - This is over 2,200 additional people.
- There has been a reduction in general traffic levels in the city centre:
 - An average reduction of over 1,900 in the number of vehicles entering the city centre core area during the morning peak.
 - An average reduction of around 10,900 in the number of vehicles entering the city centre core area over a 24 hour period.
- There has been an increase in walking:
 - An increase of over 12% in the number of pedestrians entering the city centre during the morning peak.
- There has been an increase in cycling:
 - An increase of over 18% in the number of cyclists entering the city centre during the morning peak.
- There has been an increase in public transport use:
 - An increase of over 36% in the number of rail passengers entering the city centre during the morning peak.
 - An increase of over 17% in the number of bus passengers entering the city centre during the morning peak.

A comparison of the 'before and after' survey data also revealed the following:

- In the morning peak (08:00 – 09:00):
 - An increase of over 6% in the number of people entering the city centre.
 - A decrease of over 4% in the number of people entering the city centre by private car.
 - More than half (53%) of the people entering the city centre in October 2013 did so using public transport, taxis, walking or cycling – compared to less than half (47.3%) in 2011.
- In an average 24 hour period:
 - Almost 11,000 fewer vehicles entering the core city centre streets
 - Associated reductions in traffic flows through inner city residential areas.
- Public transport patronage
 - An increase of around 2% in the annual number of public transport journeys – 77 million in 2011/12 to 78.5 million in 2012/13.
 - A further annual increase of around 2% to over 80 million public transport journeys in 2013/14.
- Car parking
 - The number of cars parking in Belfast city centre has increased by more than 500 on weekday mornings and by more than 1,000 on Saturday mornings.

Based on the results set out in the Report, the Belfast on the Move project has been a success in that it has met its main aims of making Belfast a more accessible city, reducing general traffic levels in the city centre and encouraging greater walking, cycling and public transport use.

3.5 BELFAST CITY CENTRE RING – SOUTH SECTION

TransportNI, Eastern Division has been developing proposals for road improvements along the south section of the City Centre Ring. This scheme will be much reduced in scale from that proposed in the Belfast Metropolitan Transport Plan (BMTP). It will focus on the needs of public transport, pedestrians and cyclists, as well as general traffic, and take cognisance of potential redevelopment opportunities.

An acceptable road 'footprint' would identify a number of viable and attractive sites for redevelopment to the south of the office district, between Sandy Row and Cromac St, and help to remove the blight that this area has suffered for many years.

4.0 NETWORK TRAFFIC AND STREET LIGHTING

Principal Engineer – Norman Chambers (9025 3006) norman.chambers@drdni.gov.uk

He is supported by the following staff:

Traffic Management 1 - Roy Gordon (9025 3007)

roy.gordon@drdni.gov.uk

This team deals with traffic improvement schemes in Belfast.



Traffic Management 2 - Graeme Salmon (9025 3026)

graeme.salmon@drdni.gov.uk

This team deals with traffic improvement schemes in Lisburn and Castlereagh and collision remedial schemes in all council areas.



Traffic Management 3 - Paul King (9025 3029)

paul.king@drdni.gov.uk

This team is responsible for residents' parking, development of car parking, cycle measures and traffic calming.



Street Lighting - David Wright (9025 3057)

david.wright@drdni.gov.uk

This team is responsible for Street Lighting, traffic bollards and the illumination of signs.



4.1 COLLISION REMEDIAL SCHEMES 2014/15 Works Completed

Scheme	Status
Upper Springfield Road / Hannahstown Hill	Completed
Millfield / Wilson Street	Completed
Ormeau Road / Annadale Embankment	Completed

COLLISION REMEDIAL SCHEMES 2015/16 Programme of Works

Scheme	Status
A2 Shore Road / Fortwilliam Park	In Progress

4.2 TRAFFIC SCHEMES 2014/15 Works Completed

Scheme	Status
Finaghy Road South, between Erinvale Avenue & Upper Malone Road – Channelisation (central carriageway hatching & edge of carriageway lines)	Completed



Finaghy Road South – central hatching

Scheme	Status
Oxford Street at May Street – Amend road layout	Completed
Shore Road at Donegall Park Avenue – New right turn filter for traffic signals	Completed



Shore Road at Donegall Park Avenue – right turn filter

Springfield Road – upgrade of zebra crossing	Completed
Upper Lisburn Road / Finaghy Crossroads – Fully controlled right turn facilities at traffic signals	Completed

TRAFFIC SCHEMES

2015/16 Programme of Works

Scheme	Status
Boucher Road / Boucher Crescent - Signalisation	In Progress

<i>Scheme</i>	<i>Status</i>
Glen Road / Suffolk Road - signalisation	In Abeyance
Oldpark Road at Torrens Avenue – Build-out and road markings	Programmed
Whitewell Crescent at Serpentine Road – Amendment to junction layout	Programmed

4.3 PEDESTRIAN MEASURES

2014/15 Works Completed

<i>Scheme</i>	<i>Status</i>
Alfred Street - Pedestrian crossing points / lowered kerbs & tactiles	Completed
Bell's Bridge Roundabout – Zebra crossings upgrade	Completed
Brown's Square – Pedestrian crossing points / lowered kerbs & tactiles	Completed
Circular Road - Pedestrian crossing points / lowered kerbs & tactiles	Completed
Dundela Avenue at North Road – Refuge island & footway widening	Completed



Dundela Avenue at North Road – Refuge island

<i>Scheme</i>	<i>Status</i>
East Bridge Street - Pedestrian crossing points / lowered kerbs & tactiles	Completed
Falls Road at Beechview Park – puffin crossing	Completed
Hawthornden Way – puffin crossing	Completed



Hawthornden Way – Puffin crossing

Library Street - Pedestrian crossing points / lowered kerbs & tactiles	Completed
Ravenhill Road near Rosetta Park – relocate traffic island	Completed
Sandown Road at King's Road – footway improvement	Completed
Springfield Road at Cupar Street – change zebra crossing to puffin crossing	Completed
Suffolk Road near Old Suffolk Road – relocation of a pedestrian refuge island	Completed
Upper Lisburn Road at Balmoral Golf Course – remove traffic island	Completed
Willowfield Street - Pedestrian crossing points / lowered kerbs & tactiles	Completed

PEDESTRIAN MEASURES**2015/16 Programme of Works**

<i>Scheme</i>	<i>Status</i>
Botanic Avenue at College Park – puffin crossing	In Progress
Castlereagh Road at Montgomery Road – additional pedestrian phase	Programmed
Crumlin Road at Mountainview Park – puffin crossing	Programmed
Crumlin Road at Ardoyne Library – puffin crossing	Programmed
Fortwilliam Park at Dominican College – puffin crossing	Programmed
Fortwilliam Park near Dunlambert Park – pedestrian island	In Progress
Lisburn Road at Fountainville Ave (The Bradbury Centre) – puffin crossing	Programmed
Milltown Road at Belvoir Drive – pedestrian upgrade	In Progress
Oldpark Road at Oldpark Terrace – puffin crossing and channelisation	In Abeyance
Shankill Road - Pedestrian crossing points / lowered kerbs & tactiles	In Progress
Tate's Avenue at Ebor Street – puffin crossing	Programmed
Upper Lisburn Road near Kirklowe Drive – puffin crossing	In Progress

4.4 SAFER ROUTES TO SCHOOLS 2014/15 Works Completed

<i>Scheme</i>	<i>Status</i>
Belvoir Park Primary School, Belvoir Drive	Completed
Elmgrove Primary School, Beersbridge Road	Completed
Holy Child Primary School, South Green, Andersonstown	Completed



Holy Child Primary School, Andersonstown – Safer Routes to Schools

Springfield Primary School, Springfield Road	Completed
Saint Rose's High School, Beechmount Avenue	Completed

SAFER ROUTES TO SCHOOLS

2015/16 Programme of Works

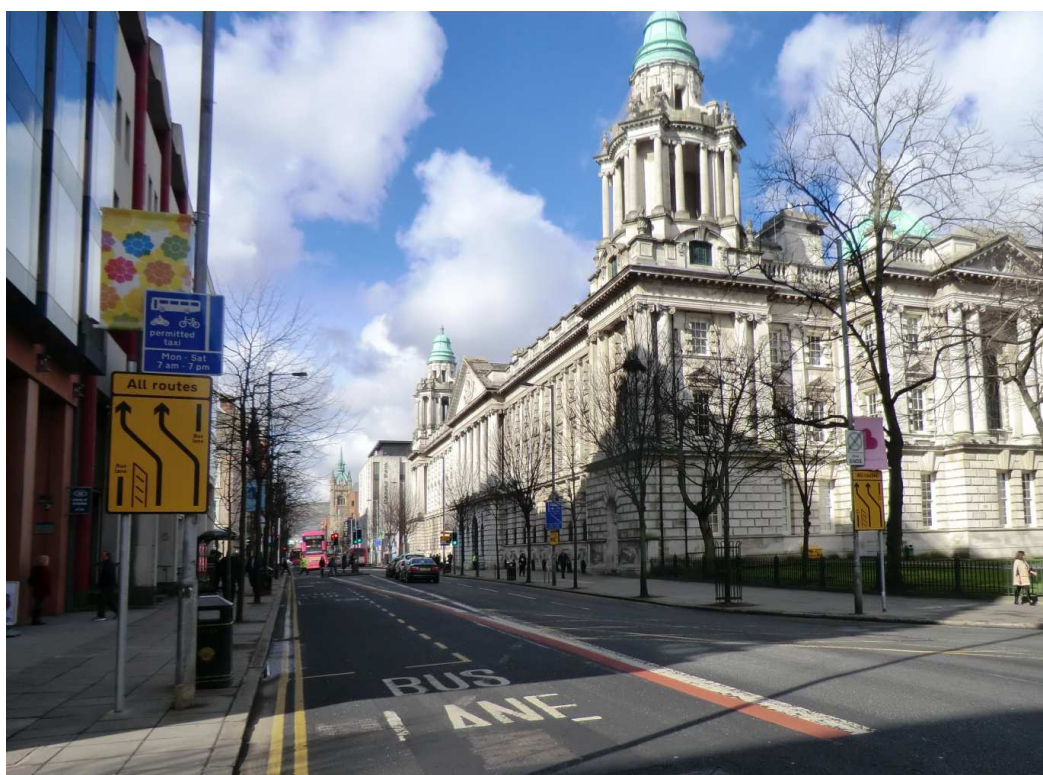
<i>Scheme</i>	<i>Status</i>
Requests for Safer Routes to Schools will be assessed and prioritised	On-going

4.5 TRAFFIC SIGNS

2014/15 Works Completed

<i>Scheme</i>	<i>Status</i>
A55 Milltown Road – 50mph repeater signs	Completed
Balfour Avenue at Shaftesbury Centre – waiting restriction plates	Completed

Scheme	Status
Ballynahatty Road – ‘Pedestrians on road ahead’ and ‘Junction on left’ signs’	Completed
Ballyutoag Road – 50mph speed limit signs	Completed
Barrack Street – waiting restriction signs	Completed
Castle Place – ‘Bus Tours’ signs	Completed
Church Avenue at Malone Gardens, Dunmurry – New ‘Stop’ sign	Completed
Connswater Street near Newtownards Road – warning signs for elderly pedestrians	Completed
Creighton Road – 50mph repeater signs	Completed
Donegall Square South – laning signs	Completed



Donegall Square South – laning signs

Dundela Avenue – waiting restriction plates	Completed
Dunmurry Lane – 40mph speed limit signs	Completed
Durham Street – waiting restriction plate	Completed
Ebor Street – new ‘One Way’ arrow signs	Completed
Galwally Park at Ormeau Road – ‘No Through Road’ sign	Completed

<i>Scheme</i>	<i>Status</i>
Gardiner Place – waiting restriction plate	Completed
Greenville Street – waiting restriction time plate	Completed
Hamill Street – waiting restriction plates	Completed
Hawthornden Way – upgrade of 40mph repeater signs	Completed
Hollywood Road, Milltown Road & Sunnyside Street – direction signage for Army Reserve Centres	Completed
King's Road – hazard warning sign	Completed
Mount Eagles Avenue and Crescent – 'Playground' warning signs and plates	Completed
Peter's Hill at Townsend Street – direction signage for Townsend Enterprise Park & Townsend Presbyterian Church	Completed
Rutherglen Street – 2 no. 'Children/School' signs	Completed
Stewart Street – 'Playground' warning signs and plates	Completed
Short Strand in lay-by – limited waiting signs	Completed
Tomb Street – limited waiting signs	Completed

TRAFFIC SIGNS

2015/16 Programme of Works

<i>Scheme</i>	<i>Status</i>
Belfast Signing Strategy - Direction Signage for City Centre / Inner City & Arterial Routes	In Progress
Stranmillis area – Upgrade of existing direction signage	In Progress
Sydenham Bypass at Dee Street – new direction sign	In Progress

4.6 CARRIAGEWAY MARKINGS

2014/15 Works Completed

<i>Scheme</i>	<i>Status</i>
Alexandra Park Avenue – revocation of double yellow lines	Completed*
Alloa Street at entrance to play park – 3 no. Sections of pedestrian guard rail	Completed
Balfour Avenue – waiting restriction	Completed*

Scheme	Status
Baltic Avenue - waiting restriction	Completed*
Bilston Road at Crumlin Road – corner restrictions	Completed
Boucher Place at Boucher Crescent – corner restrictions	Completed
Blythe Street – ‘I’ bar marking	Completed*
Cairnburn Road at Old Holywood Road / Glenmachan Road – warning lines on approach to junctions	Completed
Castlereagh Road, Tesco store to Ormonde Gardens – improvements to and extending of central hatching / right turn pockets	Completed
Cavehill Road – 4 no. ‘I’ bar markings	Completed*
Cavehill Road – yellow box junction markings	Completed*
Clifton Street – waiting restriction	Completed*
Cromac Street at East Bridge Street – yellow box junction	Completed
Crumlin Road at White Brae – edge of carriageway markings	Completed
Deramore Park South at Malone Road – ‘Give Way’ junction markings	Completed
Dock Street at Garmoyle Street – hatched nose markings at end of island	Completed
Donegall Square North at Linenhall Street – extension of yellow box junction	Completed
Divis Street at Millfield – 2 no. ‘Straight ahead’ arrows & 1 no. ‘turn right’	Completed
Dundela Avenue at North Road – junction markings	Completed*
Dunluce Avenue at Lisburn Road – 3 no. hazard markings	Completed*
Eastleigh Drive at Library Court – new hatched markings at car-park entrance	Completed
Finaghy Road South – central hatching	Completed*
Finbank Gardens – 2 no. sections of pedestrian guard rail	Completed*
Fitzwilliam Avenue at Ormeau Road – corner restrictions	Completed
Gardiner Place – waiting restriction	Completed*
Glenmachan Place at Boucher Road – corner restrictions	Completed
Gransha Avenue at Glen Road – corner restriction	Completed*
Harrisburg Street & Pittsburg Street, Shore Road – corner restrictions	Completed
Iveagh Drive – waiting restrictions (double yellow lines)	Completed
Kelvin Parade – corner restrictions	Completed*

Scheme	Status
Kings Road – extension to yellow box marking and ‘Slow’ marking	Completed*
Kings Street Mews – waiting restriction	Completed*
Knock Road at PSNI HQ – yellow box marking	Completed*
Knocknagoney Drive at Community Centre – on-street parking spaces marked	Completed
Ligoniel Road at Saint Vincent de Paul Primary School – pedestrian guard rail installed	Completed
Lislea Avenue – across alleyway ‘I’ bar road marking	Completed
Lockview Road - ‘end of parking’ marks	Completed
Massey Avenue – waiting restrictions	Completed
Massey Avenue at Stormont Estate – corner restrictions and bay markings	Completed
Orby Link – waiting restrictions	Completed*
Ormeau Road – Cromac Place to Cooke Street – waiting restrictions (double yellow lines)	Completed
Ormeau Road at Annadale Avenue – re-alignment of lane markings	Completed*
Mount Eagles, Dunmurry – ‘Give Way’ junction markings and warning lines	Completed
Ravenhill Road (link to Albert Bridge) – corner restriction	Completed*
Regent Street at Denmark Street – corner restrictions, central hatching and edge of carriageway markings	Completed
Renfrew Street at Fletcher Street – ‘I’ bar marking	Completed*
Roden Street/Lemberg Street – 4 no. Sections of pedestrian guard rail	Completed*
Roden Street at Distillery Street – corner restriction	Completed*
Rocky Road at Upper Knockbreda Road – corner restrictions	Completed
Rosehead, Oldpark area – ‘Give Way’ junction marking and warning lines	Completed
Saint John’s Avenue – ‘I’ bar marking	Completed*
Saint John’s Avenue at Ormeau Road – bollards installed at back of footway	Completed
Seymour Lane at Seymour Street – corner restrictions	Completed
Short Strand near Albert Bridge – waiting restriction	Completed*
Tomb Street – limited waiting	Completed*
Twaddell Avenue at Ballygomartin Road – new lane guideline marks	Completed

Scheme	Status
University Avenue – 'I' bar marking	Completed*
Upper Galwally at Saintfield Road – new lane guideline marks	Completed
Upper Knockbreda Road at Cregagh Road – lane/guide lines through junction	Completed*
Upper Knockbreda Road (near Knockbreda High School) – extension to lane markings	Completed*
Upper Newtownards Road at Astoria Gardens – hatched marking in lay-by	Completed
Upper Riga Street – 'School Keep Clear' marking	Completed
Wandsworth Road at Belmont Road – waiting restrictions	Completed*
Woodstock Place – waiting restrictions	Completed*

*Additional to programme

CARRIAGEWAY MARKINGS

2015/16 Programme of Works

Scheme	Status
Road markings will be provided as required	On-going

4.7 LEGISLATION

2014/15 Works Completed

Scheme	Status
WAITING RESTRICTIONS	
Alexandra Park Avenue near Dunmore Drive – Revocation of a section of double yellow lines	Completed
Balfour Avenue – Mon – Sat 8.00am to 6.00pm	Completed
Baltic Avenue – At Any Time	Completed
Barrack Street – Mon – Sat 8.00am to 6.00pm	Completed*
Clifton Street – At Any Time	Completed

<i>Scheme</i>	<i>Status</i>
Crumlin Road, near Mater Hospital – At Any Time	Completed
Crumlin Road near Stanhope Street – At Any Time	Completed
Durham Street – Mon - Sat 8.00am to 6.00pm	Completed
Gardiner Place – Mon - Sat 8.00am to 6.00pm	Completed
King Street Mews – At Any Time	Completed*
Massey Avenue – At Any Time	Completed
North Queen Street – Mon - Fri 8.00am to 6.00pm	Completed
Orby Link – At Any Time	Completed
Tomb Street – Mon – Fri 8.00am to 6.00pm, waiting limited to 1 hour, return prohibited within one hour	Completed
Wandsworth Road – At Any Time	Completed
Woodstock Place – At Any Time	Completed
TRAFFIC ORDERS	
Artana Street, Dromara Street & Kinallen Street – One way traffic system	Completed
Ballyutoag Road / Upper Crumlin Road – new '50mph' speed limit	Completed
Dunmurry Lane – new '40mph' speed limit	Completed
Newington Avenue & Newington Street – One way traffic system	Completed

*Additional to programme

LEGISLATION

2015/16 Programme of Works

<i>Scheme</i>	<i>Status</i>
WAITING RESTRICTIONS	
Cadogan Park – At Any Time	Programmed
Claremont Street – At Any Time	In Progress
Exchange Place – At Any Time	Programmed
Walnut Street – At Any Time	Programmed
Wellington Court – At Any Time	Programmed

Scheme	Status
TRAFFIC ORDERS	
Belfast City centre – Proposed '20mph' speed limit	In Progress
Fairhill Park – One way traffic system	In Progress
Mount Eagles Square – One-way traffic system	In Progress

4.8 DISABLED PARKING BAYS

2014/15 Works Completed

Scheme	Status
24 Ardenlee Gardens, Belfast	Completed
75 Cedar Avenue, Belfast	Completed
17 Clarendon Gardens, Belfast	Completed
19 Fernwood Street, Belfast	Completed
86 Mountcollyer Avenue, Belfast	Completed
88 Roseberry Road, Belfast	Completed
27 Stranmillis Park, Belfast	Completed
270 Tennent Street, Belfast	Completed
101 Tildarg Street, Belfast	Completed
27 Larkfield Gardens, Belfast	Completed
59 Oberon Street, Belfast	Completed
12 Ohio Street, Belfast	Completed
22 Wheatfield Gardens, Belfast	Completed
Bays removed:	
15 Glandore Gardens	Completed
16 Willowfield Parade	Completed
12 Ohio Street, Belfast	Completed
20 Kimona Drive	Completed

<i>Scheme</i>	<i>Status</i>
13 Rugby Road	Completed
20 College Park Avenue	Completed

DISABLED PARKING BAYS

2015/16 Programme of Works

<i>Scheme</i>	<i>Status</i>
49 Fairhill Park	Programmed
45 Lomond Avenue	Programmed
56 Wilgar Street	Programmed
54 Jocelyn Street	Programmed
12 Sinclair Street	Programmed
78 Belmont Road	Programmed
13 Castleview Terrace	Programmed
14 Holland Drive	Programmed
45 Veryan Gardens	Programmed
32 Ardcarne Drive	Programmed
12 Knocknagoney Park	Programmed
61 Ulsterville Gardens	Programmed
11 Eastleigh Crescent	Programmed
19 Tynedale Green	Programmed
27 Newington Avenue	Programmed

4.9 STREET LIGHTING

2014/15 Works Completed

<i>Scheme</i>	<i>Status</i>
Glen Road Phase 2	Completed

Scheme	Status
Suffolk Road	Completed
Ormonde Gardens	Completed
Willisfield Park / Gardens / Avenue	Completed
Wedderburn Park / Gardens / Avenue	Completed
Rathmore Park / Gardens	Completed
Percy Street	Completed
Bristow Park	Completed
Cupar Street Lower	Completed
Deramore Drive / Crescent	Completed
Chadwick Street	Completed
Ardavon Park	Completed
Ardavarna Park / Crescent	Completed
Ascot Park / Gardens	Completed
Ventry Street	Completed
Belmont Park	Completed
Belmont Drive	Completed
Seaview Gardens / Seamount	Completed
Balholme Drive	Completed
Norglen Gardens	Completed
York Park	Completed
Iris Drive	Completed
Fairway Gardens / Avenue	Completed
Berwick Road	Completed*
Balholme Drive	Completed*
Windsor Drive	Completed*
Deramore Park South	Completed*
Stewartstown Avenue	Completed*

<i>Scheme</i>	<i>Status</i>
Gainsborough Drive	Completed*
Florence Court/Walk/Drive	Completed*
Forfar Street	Completed*
Forest street	Completed*
Fort Street	Completed*
Duffield Park	Completed*
Hazelbrook Drive	Completed*
Myrtlefield Park	Completed*
Green Road	Completed*
Knock Dual Carriageway	Completed*
Ormiston Gardens	Completed*

*Additional to programme

STREET LIGHTING

2015/16 Programme of Works

<i>Scheme</i>	<i>Status</i>
Blacks Road	Programmed
Mountforde Drive/Road	Programmed
Agnes Street	Programmed
Cregagh Estate Ph1 & Ph2	Programmed
Robina Street	Programmed
Leopold Street	Programmed
Parkway	Programmed
Harrowgate Street	Programmed
Hawthorn Street	Programmed

<i>Scheme</i>	<i>Status</i>
Iris Street	Programmed
Forthriver Way	Programmed
Whitla Street	Programmed
Herbert Street	Programmed
Springfield Road (Monagh Road Junction)	Programmed
Duncrue Street (Whitla Street underpass)	Programmed
Northland Street	Programmed
Lenadoon Avenue Ph1 & Ph2	Programmed
Kingswood Street	Programmed
Lord Street	Programmed
New Lodge Road	Programmed
Markets Area Ph1 & Ph2	Programmed
Osbourne Gardens	*Programmed
Governors Bridge	*Programmed
Holidays Road	*Programmed
Belmont Church Road	*Programmed

4.10 CYCLE MEASURES

2014/15 Works Completed

<i>Scheme</i>	<i>Status</i>
Milewater Road footbridge - Wheeling ramps	*Completed
Sandown Road at Greenway - Toucan Crossing	Completed
A55 Milltown Road - Toucan Crossing	**Completed

*Additional to 2014/15 Programme

**Formerly within Castlereagh Council area.

CYCLE MEASURES


2015/16 Programme of Works

<i>Scheme</i>	<i>Status</i>
A2 Bridge End on Queens Bridge Belfast – New Toucan Crossing	*Programmed
A2 Queen Elizabeth Bridge - Upgrade to Toucan Crossing	*Programmed
Albertbridge Road – cycle lanes and cycle track.	*Awaiting signage
Alfred Street / Upper Arthur Street cycleway	Programmed
Castle Street/ Donegall Place to Middlepath Street cycleway	Programmed
College Avenue to Castle Street/ Donegall Place cycleway	Programmed
Duncrue Street – New Toucan Crossing	*In progress
Various locations - Sheffield cycle stands	*In progress
Westlink /Grosvenor Road to College Avenue cycleway	Programmed
Whitla Street at Nelson Street underpass–Upgrade to Toucan Crossing	*In progress

*Carried over from 2014/15 Programme.

4.11 TRAFIC CALMING

2014/15 Works Completed

<i>Scheme</i>	<i>Status</i>
Diamond Gardens area - Advisory 20mph Zone 	Completed.

TRAFFIC CALMING

2015/16 Programme of Works

<i>Scheme</i>	<i>Status</i>
Belvoir Drive – Traffic Calming Scheme	Construction work ongoing. To be completed May 2015.
Flax Street - Traffic Calming Scheme	*DOJ to provide funding
Glenburn Road & Ulster Avenue – Traffic Calming Scheme	* Objections received and under consideration.
Sicily Park area - Advisory 20mph Zone	Signs to be erected in May 2015.
Whitewell Crescent & Parade – Traffic Calming Modifications	Legislative process successfully completed. No funding available to proceed with the works at present.

*Carried over from 2014/15 Programme.

It should be noted that all Traffic Calming schemes are subject to a legislative process and to the availability of funding before they can proceed.

The legislative process provides for representations / objections to be received on our proposals. Where residents do not support individual schemes or where objections are received, it may not be possible to deliver our intended programme. In this event substitutions, on a Division-wide basis, may be made throughout the financial year.

4.12 CAR PARKING

2014/15 Works Completed

<i>Scheme</i>	<i>Status</i>
Motorcycle Parking	We continued to develop the design of and drafting of the legislation for free on-street parking bays for motorcycles in several locations in Belfast City Centre.
Provision of additional On-Street Pay and Display spaces as identified.	A letter has been sent to Council indicating the streets where we propose providing additional on-Street Pay and Display parking.
Review of our off and on-street parking charges.	We noted any necessary remedial actions and these were attended to on a priority basis.

CAR PARKING

2015/16 Programme of Works

<i>Scheme</i>	<i>Status</i>
Car Park Management	We are working closely with Council officials to ensure the smooth transfer of management responsibility to the Council.
Motorcycle Parking	We will proceed to formal consultation this Autumn.
Provision of additional On-Street Pay and Display spaces as identified.	We await a reply from Council and an indication of support before we progress with this issue.

4.13 RESIDENTS' PARKING

The formal consultations for the Lower Malone and the College Park Avenue/Rugby Road areas were carried out between 29 October 2014 and 19 November 2014. During this time we received a significant number of objections and representations on the two proposals. Officers met with objectors throughout March 2015 and the issues which they raised are now being considered with a view to deciding on the way forward. It is envisaged the earliest a scheme could be implemented on the ground in these areas would be towards the end of the 2015/2016 financial year, although this is very much dependent upon there being a positive outcome of a further consultation process.

5.0 NETWORK TRANSPORT TELEMATICS

Principal Engineer – Brian Maxwell (9025 4500) brian.maxwell@drdni.gov.uk

He is supported by the following staff:

Declan Murphy (9025 4536) declan.murphy@drdni.gov.uk

This team is responsible for the day to day running of the Traffic Information and Control Centre. It is responsible for the installation, maintenance and operation of Intelligent Transport Systems (ITS) including traffic control on the urban and motorway networks and the provision of traffic and travel information.



James Middleton (90254529) james.middleton@drdni.gov.uk

This team has specific responsibilities for issues of Road Safety including the development of the Road Safety Engineering Report and the establishment of Central Road Safety Unit. It is also responsible for compiling traffic census, vehicle kilometre travel surveys and managing the road works website.



TICC's TrafficwatchNI website



M1 / A12 Westlink Traffic Control

5.1 NETWORK TRANSPORT TELEMATICS 2014/15 Works Completed

Scheme	Status
TRAFFIC AND TRAVEL INFORMATION	
We will continue to enhance the trafficwatchni website and improve our social media facilities as appropriate.	Ongoing
8 No. M2 foreshore Variable Message Signs (VMS) have been upgraded to ensure their continued effectiveness.	Complete
URBAN CLOSED CIRCUIT TELEVISION (CCTV) CAMERAS	
Review CCTV coverage to ensure its continued adequacy and identify camera locations that are in need of upgrade.	Ongoing
TRAFFIC SIGNALS	
We will monitor traffic signal timings to ensure they are appropriate for the prevailing traffic conditions and subject to adequate funding we will upgrade traffic signal equipment where necessary.	Ongoing
Replacement of Traffic Signals Blacks Road / M1 On-Slip. This work is currently on site and should be substantially complete by end of March 2015.	Ongoing
Migrate traffic signals to utilise IP (internet protocol) based communications between site and Traffic Information and Control Centre	Commenced
Implement MOVA, an advanced form of traffic signal control, at Antrim Road / North Circular Road.	Ongoing
MOTORWAY COMMUNICATIONS AND CONTROL	
Utilise TICC's motorway communications & control infrastructure together with CCTV traffic monitoring facilities to efficiently manage traffic on motorways and the Westlink.	Ongoing
CENTRAL ROAD SAFETY UNIT	
This unit will continue to have a strategic overview of road safety and the analysis of collision data on roads across the Province.	Ongoing
Installation of additional permanent traffic counting sites.	Deferred due to contract issues.

NETWORK TRANSPORT TELEMATICS 2015/16 Programme of Works

Scheme	Status
TRAFFIC AND TRAVEL INFORMATION	
We will continue to enhance the Trafficwatchni website and improve our social media facilities as appropriate.	Ongoing
URBAN CLOSED CIRCUIT TELEVISION (CCTV) CAMERAS	
Review CCTV coverage to ensure its continued adequacy and identify camera locations that are in need of upgrade.	Ongoing
Identify new locations where the provision of cameras will enhance the coverage of the CCTV network, to improve traffic control capabilities.	Ongoing
TRAFFIC CONTROL SYSTEMS	
Utilise TICC's communications and control infrastructure together with the CCTV network to ensure traffic flows are monitored and effectively managed on the urban and motorway networks.	Ongoing
We will monitor traffic signal timings to ensure they are appropriate for the prevailing traffic conditions.	Ongoing
Subject to adequate funding be made available we will upgrade traffic signal equipment as required.	Ongoing
Provide increased resilience to the traffic control system by migrating traffic signals to utilise more reliable IP (internet protocol) based communications	Ongoing
CENTRAL ROAD SAFETY UNIT	
This unit will continue to have a strategic overview of road safety and the analysis of collision data on roads across the Province.	Ongoing

6.0 NETWORK MAINTENANCE

Principal Engineer – Colin Sykes (9025 3111) colin.sykes@drdni.gov.uk

He is supported by the following staff:

**Belfast South Section Engineer - Gareth McKibbin
(9025 4609)**

gareth.mckibbin@drdni.gov.uk

1a Airport Road, Belfast, BT3 9DY
(As Belfast North below)



**Belfast North Section Engineer – Brian O’Neill
(9025 4044)**

brian.oneill@drdni.gov.uk

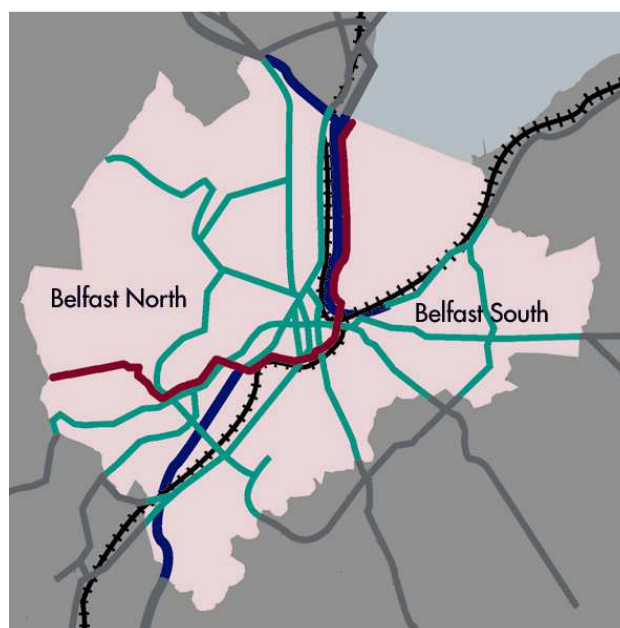
148 – 158 Corporation Street, Belfast, BT1 3DH
This team is responsible for contacts with the public and elected representatives, highway inspections, resurfacing, responsive repairs, routine maintenance, winter gritting, road opening consents and licences, public liability claims and liaison with the service utility companies.



**Maintenance Support Engineer- Trevor McClay
(9025 3098)**

trevor.mcclay@drdni.gov.uk

This team is based at Hydebank and is responsible for general co-ordination, bidding, allocating and monitoring finances, maintenance of safety fences, contract monitoring, statistics and enforcement.



6.1 CARRIAGEWAY RESURFACING

2014/15 Works Completed

<i>Scheme</i>	<i>Status</i>
BELFAST SOUTH	
From April 2014 to March 2015, 15.69km of carriageway has been resurfaced in the Belfast South area. This equates to 60890sqm and includes the schemes listed below.	
Middlepath Street/ Bridge End - Part	Completed
Cyprus Avenue	Completed
Bloomfield Road	Completed
Donegall Road – Shaftesbury Square to Euterpe Street	Completed
Sandown Road - Part	Completed
Bell's Bridge Roundabout	Completed
Lord Street/Constance Street	Completed
Kinedar Crescent/ Pirrie Road	Completed*
Ballymiscaw Road - part	Completed*
Bridge End – Dalton Street to Queen's Bridge	Completed*
Sharman Road	Completed*
Gilnahirk Road - Part	Completed*
A55 Knock Road - Part	Completed*
BELFAST NORTH	
From April 2014 to March 2015, 20.15km of carriageway has been resurfaced in the North Belfast area. This equates to approximately 80,347sqm and includes the completed schemes listed below.	
Azalea Gardens	Completed*
Almond Drive	Completed*
Ben Madigan Park	Completed
Bradbury Place	Completed
Castle Park	Completed*
Colin Glen Road	Completed
Duncrue Crescent	Completed*
Duncrue Street	Completed*
Forthriver Road	Completed
Garvey Glen	Completed*
Gardenmore Road	Completed*

<i>Scheme</i>	<i>Status</i>
Glen Road – A55 to Ramoan Gardens	Completed
Great Victoria Street	Completed*
Greenane Crescent	Completed*
Greenane Drive	Completed*
Hopewell Avenue	Completed*
Laburnum Row	Completed*
Mount Eagles Roundabout	Completed*
Ormeau Road	Completed
Pantridge Road	Completed*
Pembroke Loop	Completed
Railway Street	Completed*
Rosgoill Drive	Completed*
Rosgoill Gardens	Completed*
Shaftesbury Square	Completed*
Shannon Street	Completed*
Somerton Road	Completed*
Springfield Road (Monagh By Pass) – Upp S'Field Rd to S'Field Rd	Completed
Wellwood Street	Completed*

*additional to programme

CARRIAGEWAY RESURFACING

2015/16 Programme of Works

<i>Scheme</i>	<i>Status</i>
BELFAST SOUTH	
Ramore Park	Ongoing
Vidor Gardens	Ongoing
Finaghy Road South - Part	Programmed
BELFAST NORTH	
Kennedy Way – Stockman's Lane R'About to Andersonstown Road R'About	Programmed
Dublin Road – Bankmore Street to Bradbury Place	Programmed

6.2 FOOTWAY RESURFACING

2014/15 Works Completed

<i>Scheme</i>	<i>Status</i>
BELFAST SOUTH	
From April 2014 to March 2015, 6.56km of footway has been resurfaced in the Belfast South area. This includes the schemes listed below.	
Middlepath Street/ Bridge End - Part	Completed
Cyprus Avenue	Completed
Bloomfield Road	Completed
Donegall Road – Part	Completed
Sandown Road- Part	Completed
Bell's Bridge Roundabout - Part	Completed
Lord Street/Constance Street	Completed
Kinedar Crescent/ Pirrie Road	Completed*
Ballymiscaw Road - part	Completed*
Sharman Road	Completed*
Gilnahirk Road - Part	Completed*
A55 Knock Road - Part	Completed*
BELFAST NORTH	
From April 2014 to March 2015, 13.72km of footway has been resurfaced in the North Belfast Belfast area. This includes the completed schemes listed below.	
Areema Estate	Completed*
Ben Madigan Heights	Completed
Ben Madigan Park South	Completed
Bingnian Drive	Completed*
Commedagh Drive	Completed*
Castle Park	Completed*
Greenane Crescent	Completed*
Greenane Drive	Completed*
Glengoland Park	Completed*
Glengoland Avenue	Completed*
Glengoland Gardens	Completed*
Glengoland Grescent	Completed*

<i>Scheme</i>	<i>Status</i>
Glengoland Parade	Completed*
Kilbourne Park	Completed*
Lyndhurst Link	Completed*
Lyndhurst Way	Completed*
Lyndhurst Grove	Completed*
Lyndhurst Close	Completed*
Lyndhurst Rise	Completed*
Linenhall Street	Completed*
Mountcollyer Avenue	Completed*
Old Suffolk Road	Completed*
Parkmount Street	Completed*
Railway Street	Completed*
St Agnes Drive	Completed
South Link	Completed
Seaview Street	Completed*
Westland Estate	Completed
York Road	Completed

*Additional to programme

FOOTWAY RESURFACING

2015/16 Programme of Works

<i>Scheme</i>	<i>Status</i>
BELFAST SOUTH	
Ramore Park	Ongoing
Vidor Gardens	Ongoing
Finaghy Road South - Part	Programmed

6.3 DRAINAGE

2014/15 Works Completed

Scheme	Status
BELFAST SOUTH	
Finaghy Cross-Roads	Completed
BELFAST NORTH	
Ballygomartin Road	Completed*
Broadway	Completed*
Corporation Street	Completed*
Fortwilliam Park	Completed*
Forthriver Dale	Completed
Fairhill Park	Completed
Grosvenor Road	Completed*
Laganbank Road	Completed*
Rydalmere Street	Completed*
Shore Road at Whitewell Road	Completed*
Shore Road at Grays Lane	Completed*
Shore Road at Fortwilliam Park	Completed*
Trenchard Road	Completed*
Upper Crumlin Road at 1063	Completed

*Additional to Programme

DRAINAGE

2015/16 Programme of Works

Scheme	Status
BELFAST SOUTH	
Schemes to be promoted when funding becomes available	
BELFAST NORTH	
Schemes to be promoted when funding becomes available	

6.4 PUBLIC REALM Streets Ahead Project (DSD)

2014/15 Works Completed

The first phase of The Belfast Streets Ahead project funded by DSD, which aimed to improve the public areas of Belfast City Centre came to an end in July 2012. This work involved the reconstruction of streets with granite paving, the provision of new street furniture, lighting, signs and landscaping and also included some public art and sculpture. Future maintenance of these streets now rests with Transport NI.

6.5 STREETS AHEAD PROJECT (DSD) Works

2015/16 Programme of Works

<i>Scheme</i>	<i>Status</i>
BELFAST NORTH	
Bank Square / King Street	Completed

6.6 LIAISON WITH UTILITIES

2014/15 Works Completed

<i>Scheme</i>	<i>Status</i>
NI WATER	
TransportNI staff will continue to work closely with NI Water and their Consultants on the major upgrade of NIW mains infrastructure throughout Belfast and in particular North Belfast.	Ongoing
PHOENIX GAS	
No major infrastructure builds notified. Service connection for new customers may occur.	Ongoing
VIRGIN MEDIA	
No major infrastructure builds notified. Service connection for new customers may occur.	Ongoing
POWER NI	
No major infrastructure builds notified. Service connection for new customers may occur.	Ongoing
BT	
No major infrastructure builds notified. Service connection for new customers may occur.	Ongoing

LIAISON WITH UTILITIES

2015/16 Programme of Works

<i>Scheme</i>	<i>Status</i>
NI WATER	
TransportNI staff will continue to work closely with NI Water and their Consultants on the major upgrade of NIW mains infrastructure throughout Belfast and in particular North Belfast.	In Progress
PHOENIX GAS	
No major infrastructure builds notified. Service connection for new customers may occur.	Ongoing
VIRGIN MEDIA	
No major infrastructure builds notified. Service connection for new customers may occur.	Ongoing
BT	
No major infrastructure builds notified. Service connection for new customers may occur.	Ongoing
POWER NI	
No major infrastructure builds notified. Service connection for new customers may occur.	Ongoing

7.0 NETWORK PLANNING

Principal Engineer – Philip Robinson (9025 3080) philip.robinson@drdni.gov.uk

He is supported by the following staff:

Development Control Team 1 – Sid Stevenson (9025 3588)
sid.stevenson@drdni.gov.uk

This team manages the review of Transport Assessments associated with planning applications, Strategic/Significant Planning Applications and Private Streets determinations, bonds and adoption certificates for the Division.



Development Control Team 2- Stephen Cash (9025 3151)

stephen.cash@drdni.gov.uk

This team deals with development control for the Lisburn & Castlereagh Council area. Stephen also provides specialist advice on development control issues.



Development Control Team 3 - Gabriel Doherty (9025 3154)
gabriel.doherty@drdni.gov.uk

This team deals with development control for Belfast Council area and Titanic Quarter. Gabriel also provides specialist advice on development control issues in these areas.



7.1 ADOPTIONS

Adoptions completed from last spring report

Location	Length Adopted (M)
Altnagarron (Enforcement Site)	<p>Altnagarron Rise: 65 linear metres of traditional carriageway with 128 linear metres of footway plus 99 square metres of parking.</p> <p>Altnagarron View: 229 linear metres of traditional carriageway with 212 linear metres of footway and 125 linear metres of service strip (2 metres wide).</p> <p>Altnagarron Mews: 165 linear metres of traditional carriageway with 323 linear metres of footway.</p> <p>Altnagarron Close: 8 linear metres of traditional carriageway plus 207 square metres of shared surface with 26 linear metres of service strip (2 metres wide) plus 29 linear metres of buffer strip (0.5 metres wide).</p>
Ashley Grove	66 metres of traditional carriageway (bitmac with associated footways).
Aspen Walk, Twinbrook	226 metres of traditional carriageway and turning head, 113 metres of footway (East side) and 230m ² of lay-by parking.
Baden Powell Street	<p>Crumlin Road: 84 square metres of footway.</p> <p>Baden Powell Street: 180 linear metres of traditional carriageway with associated footways.</p>
Ballygomartin Drive	28 Linear metres of traditional carriageway, (including double turning head), plus associated footways.
Beit Street	79 linear metres of traditional carriageway with associated footways and 80 square metres of lay-by parking.
Bray Street/Rathlin Street	<p>Bray Street: 77 linear metres of footway plus 137 square metres of lay-by parking.</p> <p>Rathlin Street: 50 Linear metres of footway plus 78 square metres of end-on parking bays.</p>
Candahar Street	55 square metres of footway at rear of lay-by.
Castlereagh Road	Entrance to Tesco Store/Car Park: 6 linear metres of carriageway/bellmouth, including a pedestrian refuge island. 150 linear metres of new footway at the rear of the existing, (comprising 350m ² in total), for the purpose of accommodating improved sightlines.
Clonduff Drive	Fronting Play Park: 59 metres of footway – (West side).
Crumlin Road/Silvio Street	<p>Crumlin Road: 42 square metres of lay-by parking & 57 square metres of footway at rear of lay-by and at rear of existing footway.</p> <p>Silvio Street: 13 square metres of footway.</p>
Crumlin Road/Agnes Street	21 linear metres of remote footway.
Dunmisk Walk	96 linear metres of shared surface carriageway (including turning head) plus associated service strips and buffer strips.
Fortfield Place	112 linear metres of traditional carriageway with associated footways.
Fortwilliam Demense (Enforcement site)	150 linear metres of traditional carriageway with 182 linear metres of footway plus 200 linear metres of shared surface carriageway including double turning head and service strip.

Location	Length Adopted (M)
Glenburn Manor (Enforcement Site)	87m of traditional carriageway, 75m of shared surface (plus 95m ² shared area), 232m parking area and 5m link up footpath paved.
Greenwood Avenue	30 linear metres of new footway.
Inver Avenue	30 linear metres of widened footway.
Keswick Street/Bowness Street	Bowness Street: 110 linear metres of traditional carriageway with associated footways. Keswick Street: 110 linear metres of traditional carriageway with associated footways. Tennant Street: 105 metres of footway. Sydney Street West: 15 linear metres of footway.
Mount Eagles Avenue (Enforcement site)	Mount Eagles Avenue: No.127-No.157: 185 metres of traditional carriageway, associated footways and turning head. 270m ² of grass verge. Gable No 133: 32 metres of linking footway. Mount Eagles Link (No 2 – Mount Eagles Glen): 108 metres of traditional carriageway and footways. Mount Eagles Glen (No 80 – end): 245 metres of traditional carriageway, associated footway/cycle track and turning head. 152m ² of grass verge. Mount Eagles Walk (No2 – Mount Eagles Glen): 137 metres of traditional carriageway and footways.
Oxford Street	54 square metres of footway at rear of new lay-by & 58 square metres of footway at rear of existing footway.
Pilot Street/Short Street	Pilot Street (NE side): 35 linear metres of footway and carriageway crossover at the rear of existing footway (60m ² in total) to give a minimum of 2 metre width of footway. Short Street (SE side): 40 linear metres by 1 metre to the rear of the existing footway to give a full 2 metre wide footway width.
Richview Court	43 metres of mews/court style carriageway with turning head and associated footways and buffer strips.
Rossnareen Park	Rossnareen Park: 60 Linear metres of traditional carriageway (including turning head) with associated footways plus 62 linear metres of additional footway form house number 44 to 53. Rossnareen Avenue/Shaws Road & Shaws Close: Thin strip of new footway at rear of existing footway.
Silvio Street/Raleigh Street	Silvio Street: 110 linear metres of traditional carriageway with associated footways. Sydney Street West: 79 linear metres of traditional footway in two sections. Raleigh Street: 110 linear metres of traditional carriageway with associated footways.

Snugville Street	<p>Crumlin Road: 75 square metres of footway and 135 square metres of lay-by parking.</p> <p>Silvio Street: 93 square metres of footway and 23 square metres of carriageway at entrance to Baden Powell Street.</p> <p>Snugville Street: 238 square metres of footway and 23 square metres of carriageway at entrance to Baden Powell Street.</p>
St Gerard's Manor (Enforcement Site)	110 linear metres of traditional carriageway (including turning head) plus associated footways. Retaining wall supporting carriageway adjacent to house number 14 also adopted.
Victoria Parade	<p>House Nos 2A to 4B: 60 square metres of parking lay-by plus 43 linear metres of footway.</p> <p>House Nos 4A to 12B: 95 Linear Metres of traditional carriageway with associated footways (including turning head).</p>
Woodberry Lane (Enforcement Site)	123 metres of shared surface and associated 2 metre of service strip and 1 metre of overriding strip, 13 metre of turning area and 285m ² of parking bay.

7.2 PLANNING APPLICATIONS

DOE Planning already consults directly with the Council regarding planning applications which they receive in the Belfast Area. Transport NI Development Control teams advise Planning Service on the roads and transportation issues associated with both major and minor planning applications.